



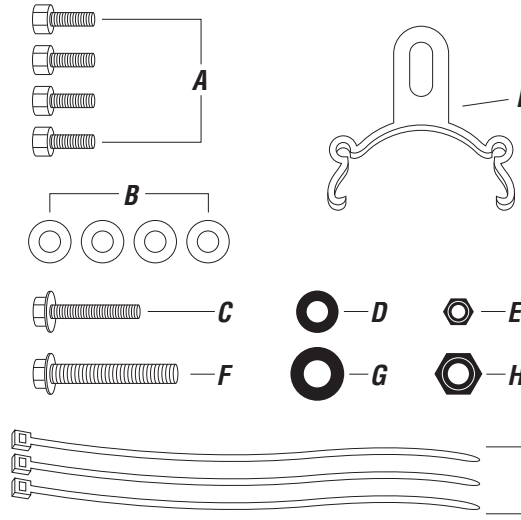
Hardcore Fender Installation Instructions

For Models:
7046, 7046-3, 7047, 7047-3, 7048

Thanks for buying these Planet Bike fenders. We designed them to make you want to steer your bike towards big puddles and get through 'em with a smile. If you have any questions regarding installation of the fenders, feel free to check out the FAQs at www.planetbike.com or email us at info@planetbike.com



Hardware Pack / Tools Needed

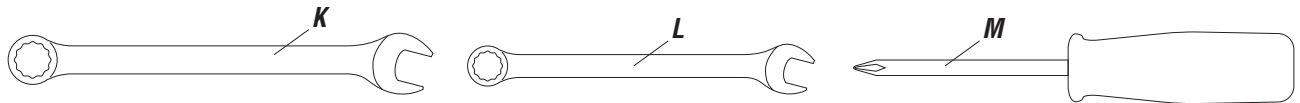


- A) 12mm bolts (x4)
- B) Silver washer (x4)
- C) 25mm bolt (x1)
- D) Small black washer (x1)
- E) Small black lock nut (x1)
- F) 45mm bolt (x1)
- G) Large black washer (x1)
- H) Large black lock nut (x1)
- I) Plastic clip (x1)
- J) Zip ties (x3)

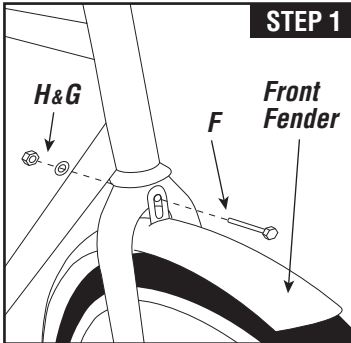
Not included:

Tools You'll Need for Installation

- K) 10mm box/ open end wrench
- L) 8mm box/ open end wrench
- M) Phillips screw driver
- N) Torque wrench (not shown)

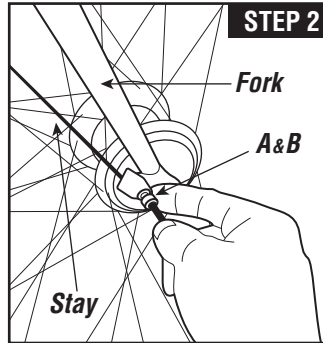


Mounting Instructions



STEP 1

Front Fender

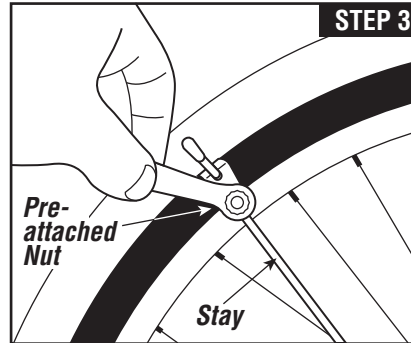


STEP 2

Fork

A&B

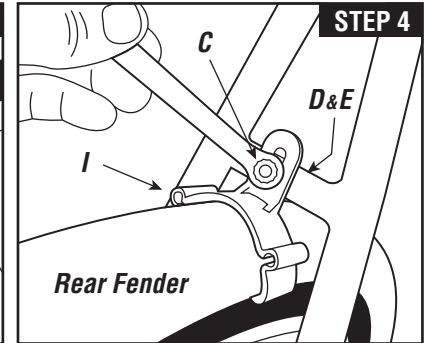
Stay



STEP 3

Pre-attached Nut

Stay



STEP 4

Rear Fender

STEP 1: Stick the 45mm bolt (F) through the attached tab on the front fender, then through the hole in the fork crown. The tab should mount on the front of the fork crown. Secure with lock nut (H) and washer (G) while keeping the fender centered over the tire. (Tighten to 45 Inlbs or 5.1 Nm.)

STEP 2: Your fenders come with safety Release Tabs on the front fender that are designed to release the fender stays from the fork if debris becomes lodged in between tire and fender. Using the 12mm bolts (A) and washers (B), bolt the stays (w/ Release Tabs) to the outside of the threaded eyelets on your fork (use lower eyelets if you have two per side). (Tighten to 20 Inlbs or 2.3 Nm.)

Note for disc brakes: If you have disc brakes, there may be interference with disc brakes. We recommend Planet Bike Cascadia fenders for bikes with disc brakes.

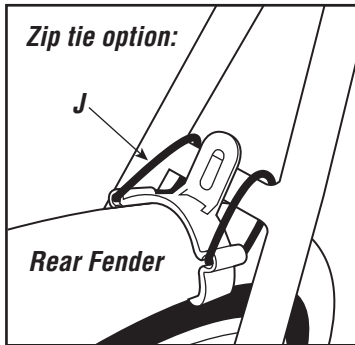
STEP 3: Front fender adjustment: Loosen the 10mm nuts that attach the stays to the front fender and position the fender so that it conforms to the curvature of the tire without rubbing. Make sure you have a minimum of 5 millimeters of clearance between the tire and fender. You may have to adjust the height of the tab mounted to the fork crown to achieve this clearance (see step 1). Tighten the nuts snugly, but don't use all of your strength or you risk breaking the hardware. (Tighten to 30 Inlbs or 3.4 Nm.)

STEP 4: Snap the plastic clip (I) onto the rear fender and bolt it to the brake bridge using the 25mm bolt (C), washer (D) and lock nut (E). (Tighten to 45 Inlbs or 5.1 Nm.)

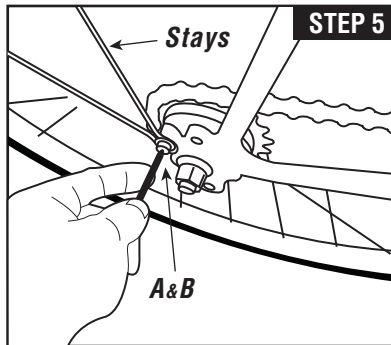


Note: Attaching the tab to the back side of the fork is acceptable if it improves fit.

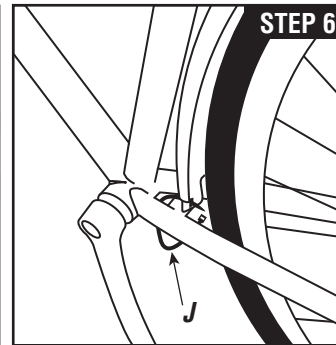
Mounting Instructions



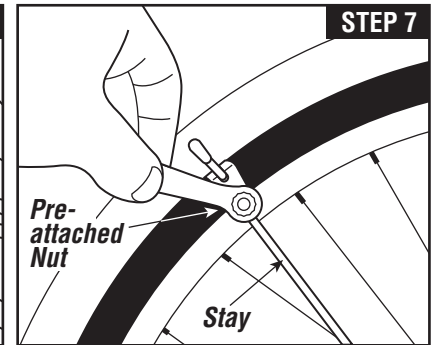
Zip tie option: If the bridge has no hole or there is no bridge, thread 2 zip ties (J) through the channels in the plastic clip. Before you firmly tighten the zip ties, proceed through steps 5, 6, and 7.



STEP 5: Using two 12mm bolts (A) and two washers (B), bolt the fender stay to the outside of the threaded eyelets on the frame. (Tighten to 35 Inlbs or 4 Nm.)



STEP 6: Attach front of rear fender to chain stay bridge using installed metal clip. If clip does not attach securely bend clip out of the way and use zip tie through hole below clip and around the bridge.



STEP 7: Rear fender adjustment: Loosen the 10mm nuts that attach the stays to the rear fender and position the fender so that it conforms to the curvature of the tire without rubbing. Make sure you have a minimum of 5 millimeters of clearance between the tire and fender. Tighten the nuts snugly, but don't use all of your strength or you risk breaking the hardware. (Tighten to 30 Inlbs or 3.4 Nm.) Firmly tighten zip ties on plastic clip near the brake bridge (if used).

STEP 8: Check complete installation to ensure hardware is tight and proper clearance is given between the tire and the fenders. Don't forget to tighten down the zip ties and cut off the extra.

Tips

- Snip off ends of zip ties for clean look
- If mud flaps are too long, trim them down
- You can bend the stays to adjust fender position
- Check fender installation before each ride to ensure hardware is tight and in good condition and fender is centered over tire with a minimum of 5mm of clearance.
- To keep the fenders running like new, replace worn parts as needed. Small parts can be found at www.planetbike.com/rebuild
- If you are unsure of any part of the installation process please consult a qualified bicycle mechanic or local bike shop.

Planet Bike,
2402 Vondron Rd
Madison, WI 53718

www.planetbike.com

Warnings

- Check overlap of your toe hitting the front fender while pedaling and turning the front wheel. If there is interference between your toe and front wheel, we do not recommend using fenders.
- There must be a minimum clearance of 5mm between the tire and fender. If you do not have this clearance, fender use is not recommended.
- Planet Bike is not liable for damage or injury as a result of improper installation or improper use.
- If you are unsure of any part of the installation process please consult a qualified bicycle mechanic or local bike shop.



©2010. Planet Bike. All Rights Reserved.